

PAMLICO COUNTY

DB00503

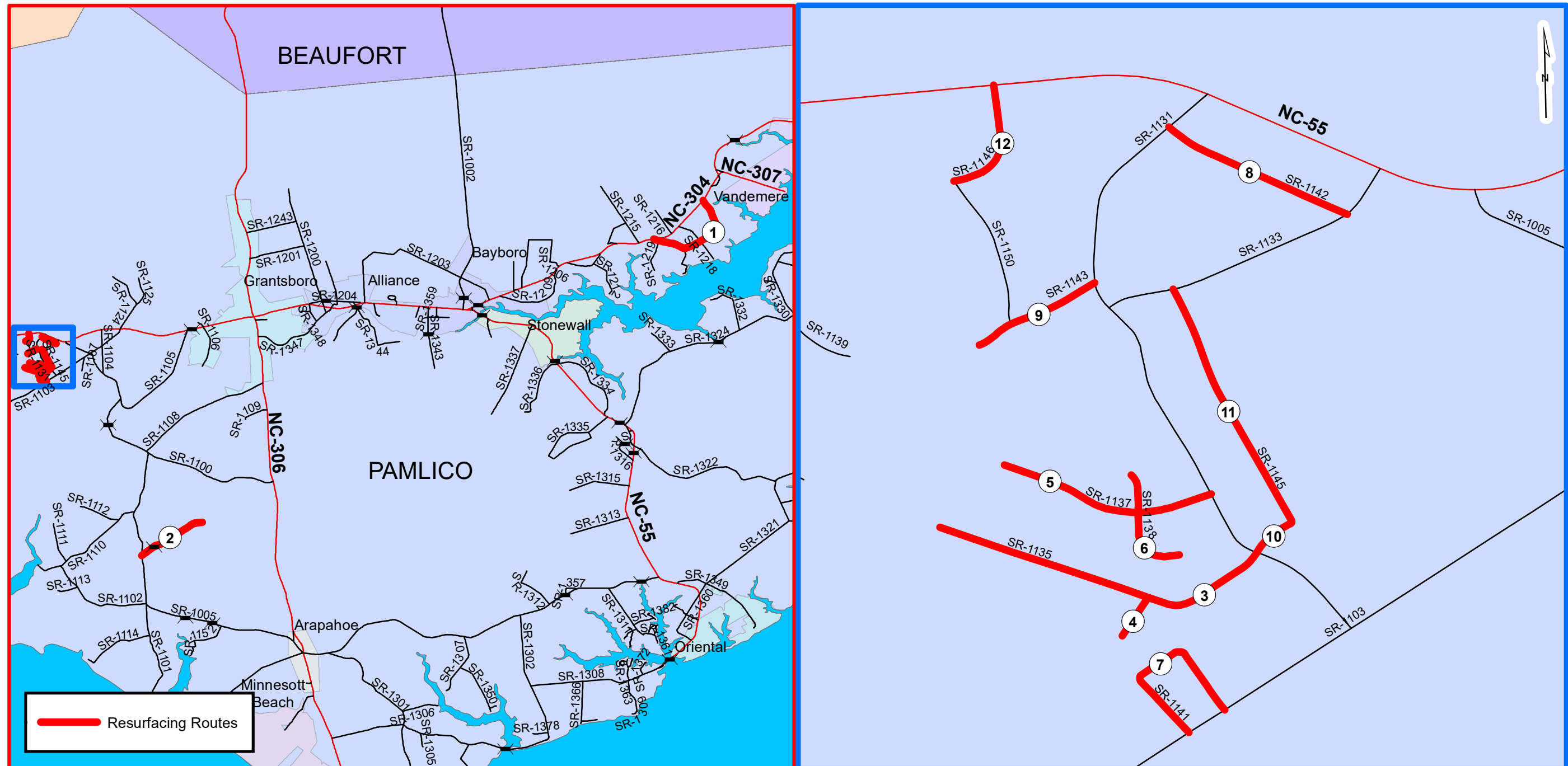
WBS# 2021CPT.02.32.20691

PROJECT REFERENCE NO.	SHEET NO.
DB00503	1

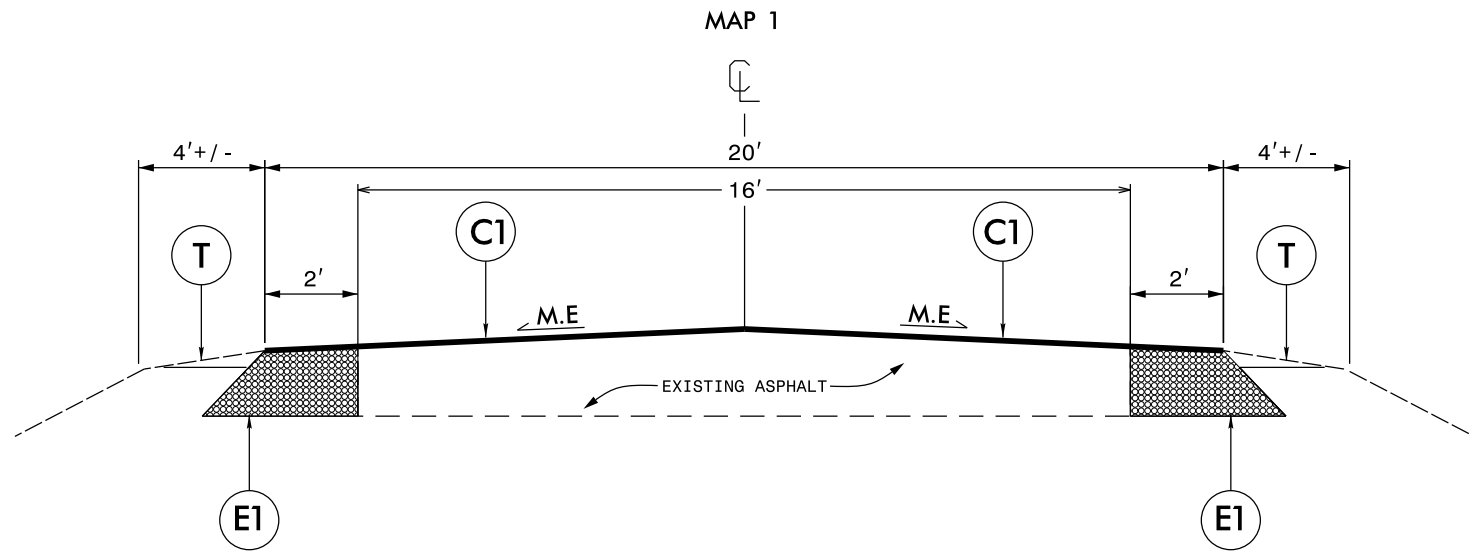


NCDOT
DIVISION 2

TYPE OF WORK: RESURFACING, WIDENING, SHOULDER RECONSTRUCTION



TYPICAL SECTION NO. 1

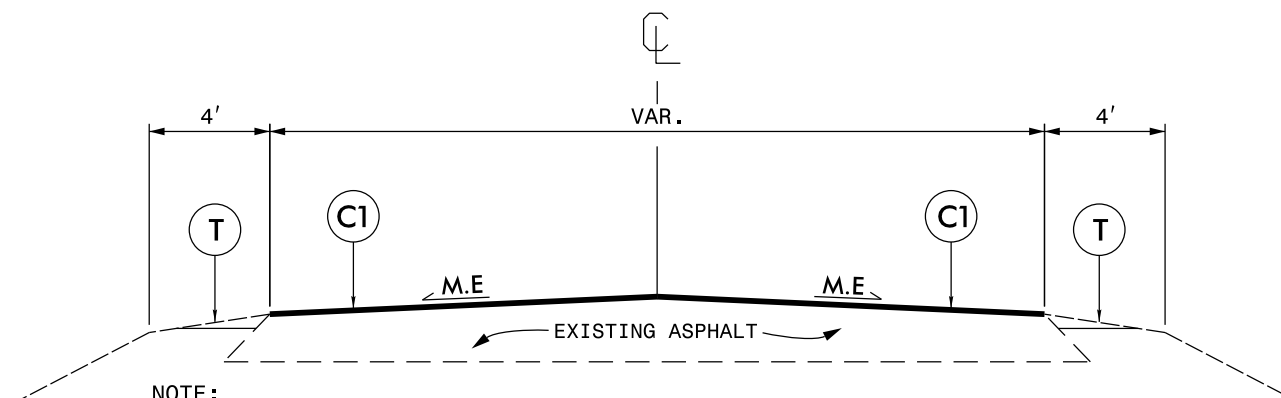


NOTE:

1. PLACE ASYMMETRICAL WIDENING, AS DIRECTED BY THE ENGINEER. MAKE FLUSH WITH THE EXISTING ASPHALT.
2. INCLUDES INCIDENTAL MILLING AT THE ENDS OF MAIN LINE AND Y-LINE SECTIONS, AS DIRECTED BY THE ENGINEER.
3. PLACE ASPHALT SURFACE COURSE AT FULL WIDTH, INCLUDING NEW WIDENING.
4. PERFORM SHOULDER RECONSTRUCTION AFTER PAVING IS COMPLETED.

TYPICAL SECTION NO. 2

MAP 2 - 12



NOTE:

1. PLACE ASPHALT SURFACE COURSE AT FULL WIDTH OF EXISTING ASPHALT PAVEMENT, AS DIRECTED BY THE ENGINEER.
2. INCLUDES INCIDENTAL MILLING AT THE ENDS OF MAIN LINE AND Y-LINE SECTIONS, AS DIRECTED BY THE ENGINEER.
3. PERFORM SHOULDER RECONSTRUCTION AFTER PAVING IS COMPLETED.

PAVEMENT SCHEDULE

C1	PROP. APPROX. 1.5" ASPHALT CONCRETE SURFACE COURSE, TYPE S9.5B AT AN AVERAGE RATE OF 165 LBS. PER SQ. YD.
E1	PROP. APPROX. 6" ASPHALT CONCRETE BASE COURSE, TYPE B25.0C AT AN AVERAGE RATE OF 684 LBS. PER SQ. YD.
T	SHOULDER RECONSTRUCTION.
V1	INCIDENTAL MILLING.

DRAWINGS NOT TO SCALE

NOTE: PAVEMENT EDGE SLOPES ARE 1:1 UNLESS SHOWN OTHERWISE.

PROJECT NO.	SHEET NO.	TOTAL NO.
DB00503	3	

SUMMARY OF QUANTITIES

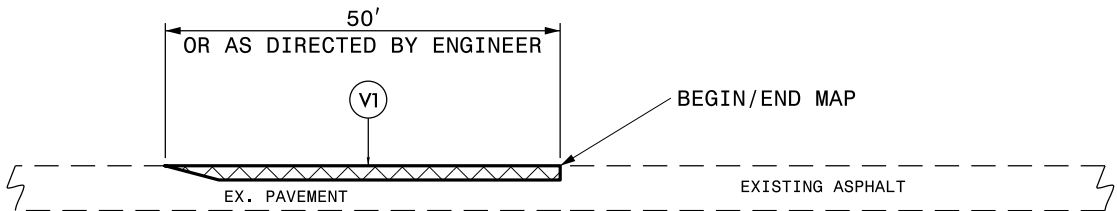
PROJECT NO	COUNTY	MAP NO	ROUTE	DESCRIPTION	TYP NO	LANES	LANE TYPE	FINAL SURFACE TESTING REQUIRED	WARM MIX ASPHALT REQUIRED	LENGTH	WIDTH	0262000000-N	1220000000-E	1245000000-E	1330000000-E	1491000000-E	1519000000-E	1575000000-E	2845000000-N	6000000000-E	6071010000-E	6084000000-E	6117000000-N	
												HAULING NCDOT SUPPLIED SHOULDER MATERIAL	INCIDENTAL STONE BASE	SHOULDER RECONSTRUCTION	INCIDENTAL MILLING	BASE COURSE, B25.0C	SURFACE COURSE, S9.5B	ASPHALT BINDER FOR PLANT MIX	ADJ. OF METER OR VALVE BOX	TEMPORARY SILT FENCE	WATTLE	SEED & MULCHING	RESPONSE FOR EROSION CONTROL	
												EA	TONS	SMI	SY	TONS	TONS	EA	LF	LF	AC	EA		
2021CPT.02.32.20691	Pamlico	1	SR 1217 LYNCHS BEACH LOOP RD	FROM NC 304 TO NC 304	1	2	2WU	NO	NO	2.14	20	86	107	4.28		1,800	2,275	233	2	250	100	2.68	1	
TOTAL FOR MAP NO. 1										2.14		86	107	4.28		1,800	2,275	233	2	250	100	2.68	1	
2021CPT.02.32.20691	Pamlico	2	SR 1115 ROBERTS RD	FROM NC 55 TO DEAD END	2	2	2WU	NO	NO	1.42	20	57	71	2.84	500		1,475	99					1.78	
TOTAL FOR MAP NO. 2										1.42		57	71	2.84	500		1,475	99					1.78	
2021CPT.02.32.20691	Pamlico	3	SR 1135 LONGLEAF DR	FROM CUL-DE-SAC TO SR 1131	2	2	2WU	NO	NO	0.51	20	20	26	1.02			575	39					0.64	
TOTAL FOR MAP NO. 3										0.51		20	26	1.02			575	39					0.64	
2021CPT.02.32.20691	Pamlico	4	SR 1136 DEERHAVEN RD	FROM DEAD END TO LONGLEAF DR	2	2	2WU	NO	NO	0.08	18	3	4	0.16			80	5	2				0.10	
TOTAL FOR MAP NO. 4										0.08		3	4	0.16			80	5	2				0.10	
2021CPT.02.32.20691	Pamlico	5	SR 1137 FOXWOOD TR	FROM CUL-DE-SAC TO SR 1131	2	2	2WU	NO	NO	0.31	21	12	16	0.62			375	25					0.39	
TOTAL FOR MAP NO. 5										0.31		12	16	0.62			375	25					0.39	
2021CPT.02.32.20691	Pamlico	6	SR 1138 BLACKHORSE RUN	FROM CUL-DE-SAC TO END MAINTENANCE	2	2	2WU	NO	NO	0.16	19	6	8	0.32			275	18	2				0.20	
TOTAL FOR MAP NO. 6										0.16		6	8	0.32			275	18	2				0.20	
2021CPT.02.32.20691	Pamlico	7	SR 1141 SMOKEY DR	FROM SR 1103 TO SR 1103	2	2	2WU	NO	NO	0.32	20	13	16	0.64			325	22					0.40	
TOTAL FOR MAP NO. 7										0.32		13	16	0.64			325	22					0.40	
2021CPT.02.32.20691	Pamlico	8	SR 1142 HALE RD	FROM SR 1131 TO SR 1333	2	2	2WU	NO	NO	0.29	18	12	14	0.58			275	18					0.36	
TOTAL FOR MAP NO. 8										0.29		12	14	0.58			275	18					0.36	
2021CPT.02.32.20691	Pamlico	9	SR 1143 HALLS CREEK RD	FROM SR 1131 TO END MAINTENANCE	2	2	2WU	NO	NO	0.17	18	7	9	0.34			180	12					0.21	
TOTAL FOR MAP NO. 9										0.17		7	9	0.34			180	12					0.21	
2021CPT.02.32.20691	Pamlico	10	SR 1144 FLORENCE ST	FROM SR 1131 TO SR 1145	2	2	2WU	NO	NO	0.07	21	3	4	0.14			75	5					0.09	
TOTAL FOR MAP NO. 10										0.07		3	4	0.14			75	5					0.09	
2021CPT.02.32.20691	Pamlico	11	SR 1145 FLORENCE ST	FROM SR 1133 TO SR 1145	2	2	2WU	NO	NO	0.44	20	18	22	0.88			65	4	1				0.55	
TOTAL FOR MAP NO. 11										0.44		18	22	0.88			65	4	1				0.55	
2021CPT.02.32.20691	Pamlico	12	SR 1146 HOLLAND DR	FROM END MAINTENANCE TO NC 55	2	2	2WU	NO	NO	0.18	18	7	9	0.36			200	13	1				0.23	
TOTAL FOR MAP NO. 12										0.18		7	9	0.36			200	13	1				0.23	
TOTAL FOR PROJ NO. 2021CPT.02.32.20691										6.09		244	306	12.18	500		1,800	6,175	493	8	250	100	7.62	1
GRAND TOTAL										6.09		244	306	12.18	500		1,800	6,175	493	8	250	100	7.62	1

PROJECT NO.	SHEET NO.	TOTAL NO.
DB00503	4	

TRAFFIC CONTROL

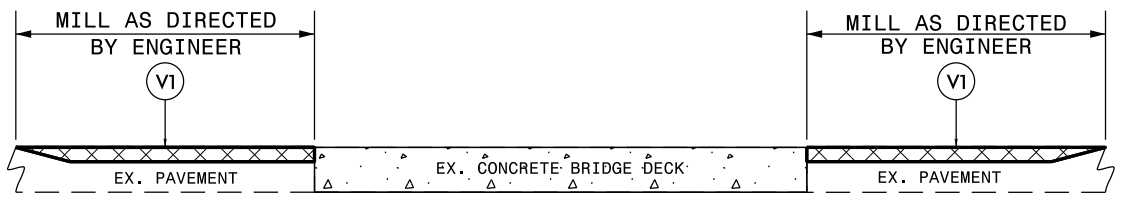
PROJECT NO	COUNTY	MAP NO	ROUTE	DESCRIPTION	TYP NO	LANES	LANE TYPE	LENGTH	WIDTH	441300000-E WORK ZONE ADVANCE/GENERAL WARNING SIGNING	445700000-N TEMPORARY TRAFFIC CONTROL
								MI	FT	SF	LS
2021CPT.02.32.20691	Pamlico	1	SR 1217 LYNCHS BEACH LOOP RD	FROM NC 304 TO NC 304	1	2	2WU	2.14	20	240	0.36
TOTAL FOR MAP NO. 1								2.14		240	0.36
2021CPT.02.32.20691	Pamlico	2	SR 1115 ROBERTS RD	FROM NC 55 TO DEAD END	2	2	2WU	1.42	20	160	0.23
TOTAL FOR MAP NO. 2								1.42		160	0.23
2021CPT.02.32.20691	Pamlico	3	SR 1135 LONGLEAF DR	FROM CUL-DE-SAC TO SR 1131	2	2	2WU	0.51	20	60	0.08
TOTAL FOR MAP NO. 3								0.51		60	0.08
2021CPT.02.32.20691	Pamlico	4	SR 1136 DEERHAVEN RD	FROM DEAD END TO LONGLEAF DR	2	2	2WU	0.08	18	12	0.01
TOTAL FOR MAP NO. 4								0.08		12	0.01
2021CPT.02.32.20691	Pamlico	5	SR 1137 FOXWOOD TR	FROM CUL-DE-SAC TO SR 1131	2	2	2WU	0.31	21	36	0.05
TOTAL FOR MAP NO. 5								0.31		36	0.05
2021CPT.02.32.20691	Pamlico	6	SR 1138 BLACKHORSE RUN	FROM CUL-DE-SAC TO END MAINTENANCE	2	2	2WU	0.16	19	18	0.03
TOTAL FOR MAP NO. 6								0.16		18	0.03
2021CPT.02.32.20691	Pamlico	7	SR 1141 SMOKEY DR	FROM SR 1103 TO SR 1103	2	2	2WU	0.32	20	36	0.05
TOTAL FOR MAP NO. 7								0.32		36	0.05
2021CPT.02.32.20691	Pamlico	8	SR 1142 HALE RD	FROM SR 1131 TO SR 1333	2	2	2WU	0.29	18	36	0.05
TOTAL FOR MAP NO. 8								0.29		36	0.05
2021CPT.02.32.20691	Pamlico	9	SR 1143 HALLS CREEK RD	FROM SR 1131 TO END MAINTENANCE	2	2	2WU	0.17	18	18	0.03
TOTAL FOR MAP NO. 9								0.17		18	0.03
2021CPT.02.32.20691	Pamlico	10	SR 1144 FLORENCE ST	FROM SR 1131 TO SR 1145	2	2	2WU	0.07	21	12	0.01
TOTAL FOR MAP NO. 10								0.07		12	0.01
2021CPT.02.32.20691	Pamlico	11	SR 1145 FLORENCE ST	FROM SR 1133 TO SR 1145	2	2	2WU	0.44	20	50	0.07
TOTAL FOR MAP NO. 11								0.44		50	0.07
2021CPT.02.32.20691	Pamlico	12	SR 1146 HOLLAND DR	FROM END MAINTENANCE TO NC 55	2	2	2WU	0.18	18	18	0.03
TOTAL FOR MAP NO. 12								0.18		18	0.03
TOTAL FOR PROJ NO. 2021CPT.02.32.20691								6.09		696	1.00
GRAND TOTAL								6.09		696	1

MILLING TYPICALS



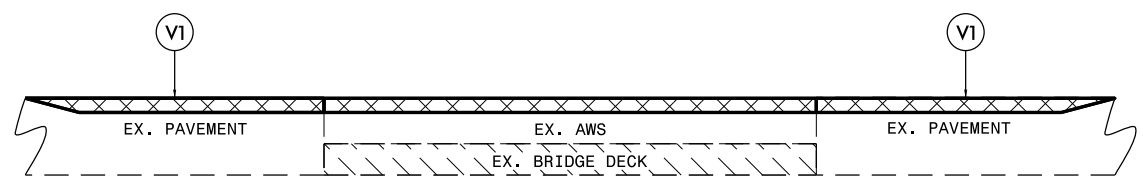
DETAIL 1
BEGIN/END MAP TIE-IN

NOTE:
1. MILLING SHALL BE PERFORMED AT MAIN LINE TIE-INS AND Y-LINE TIE-INS AS DIRECTED BY THE ENGINEER, IN ACCORDANCE WITH THIS DETAIL.



DETAIL 2
BRIDGE MILLING

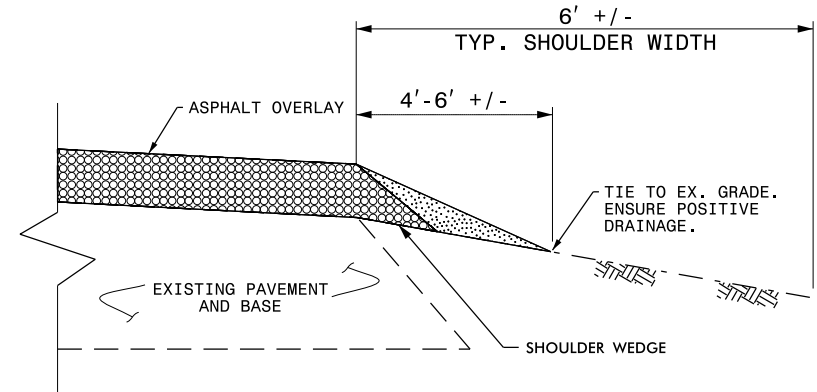
NOTE:
1. MILLING SHALL BE PERFORMED AT THE BRIDGE APPROACHES AS DIRECTED BY THE ENGINEER, IN ACCORDANCE WITH THIS DETAIL.



DETAIL 3
BRIDGE MILLING

NOTE:
1. INCLUDES MILLING FOR THE ENTIRE WIDTH OF THE BRIDGE WEARING SURFACE, AS DIRECTED BY THE ENGINEER.

SHOULDER RECONSTRUCTION TYPICAL

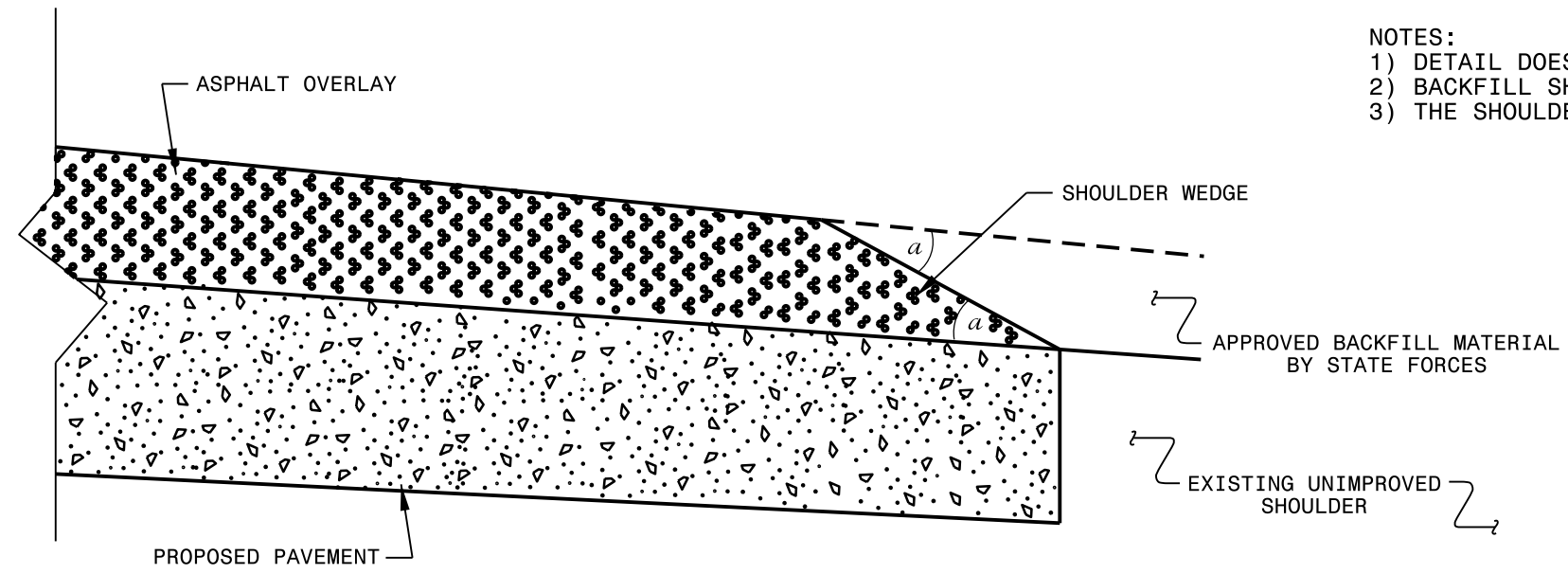


SHOULDER RECONSTRUCTION DETAIL

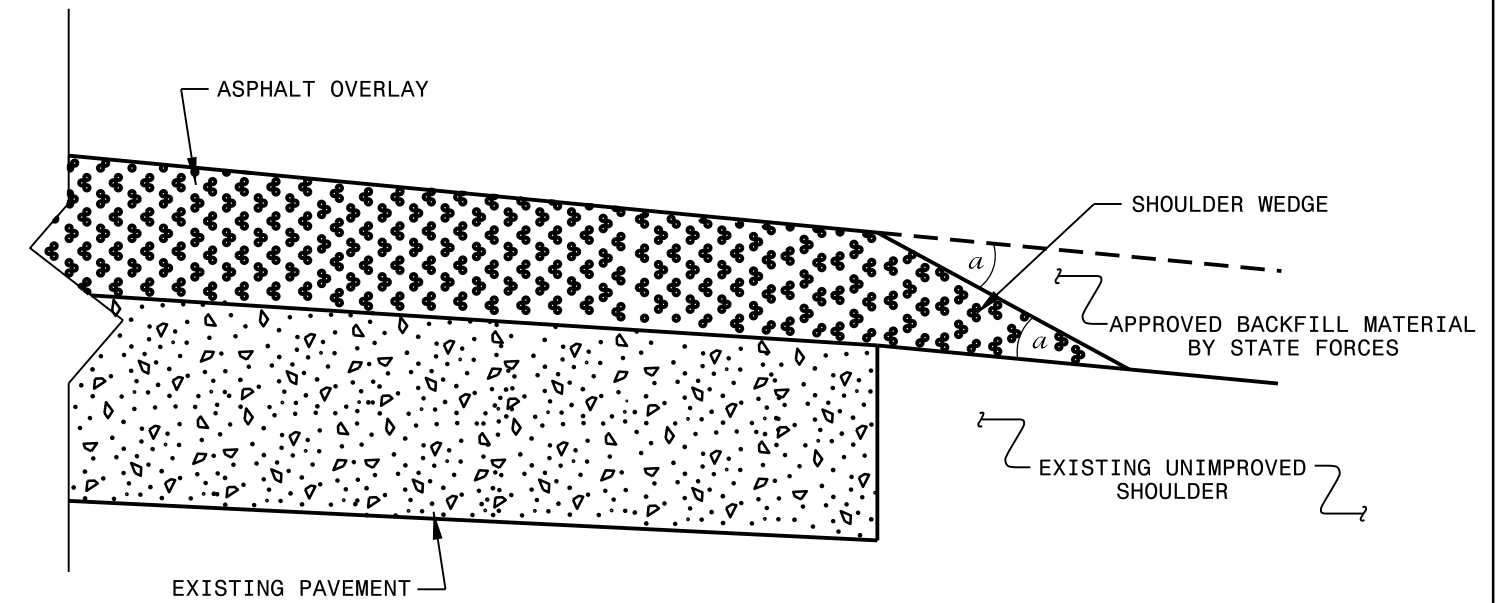
NOTE:

- SHOULDERS SHALL BE RECONSTRUCTED AS SHOWN IN STD. DWG. NO. 560.01 & 560.02, WITH A MINIMUM SLOPE OF 1" PER FOOT TO ENSURE POSITIVE DRAINAGE AWAY FROM THE ROADWAY.
- A VEGETATIVE BUFFER SHALL BE MAINTAINED BETWEEN THE DISTURBED AREA ALONG THE EDGE OF PAVEMENT AND THE DITCH SHOULDER POINT TO MINIMIZE EROSION. PULLING DITCHES OR CUTTING SHOULDERS TO GENERATE BORROW MATERIAL WILL NOT BE ALLOWED.
- REQUIRED BORROW MATERIAL MAY BE OBTAINED FROM NCDOT STOCKPILES. ANY EXCESS MATERIAL SHALL BE DISPOSED OF BY THE CONTRACTOR IN AN APPROVED DISPOSAL SITE.

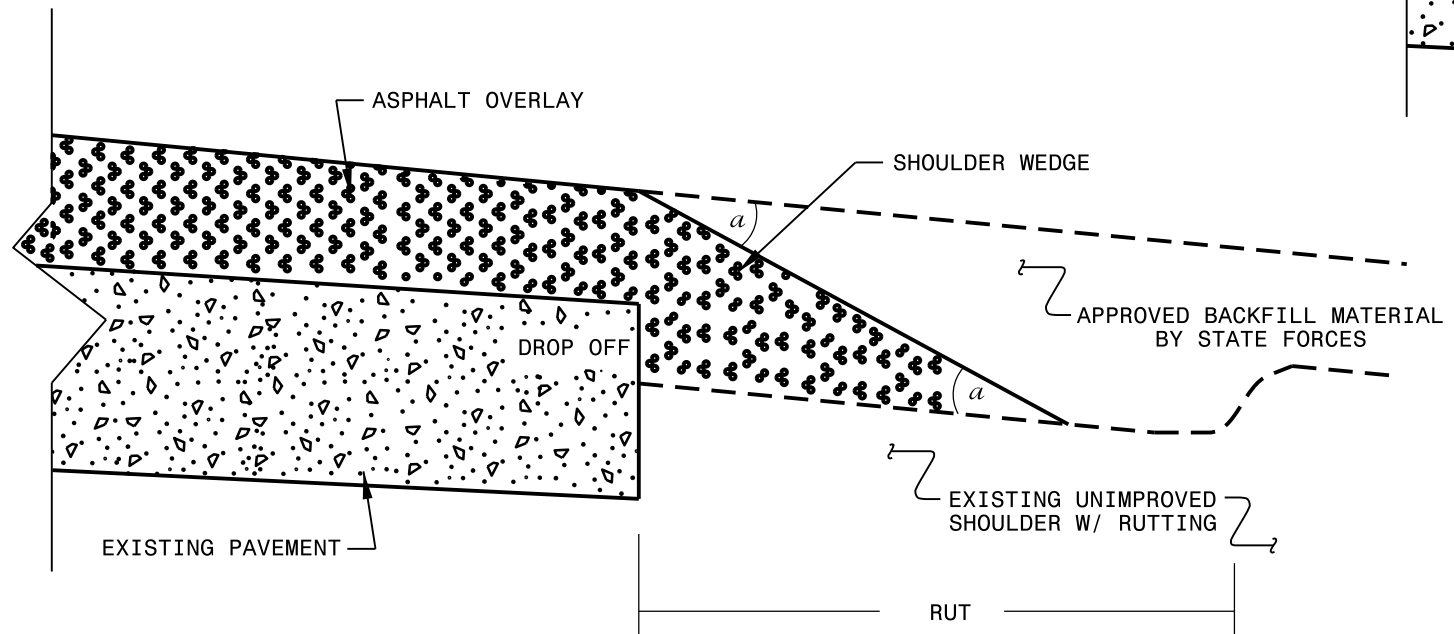
- NOTES:
- 1) DETAIL DOES NOT APPLY TO OGAFB AND ULTRA-THIN BONDED WEARING COURSE.
 - 2) BACKFILL SHOULDER WITH APPROVED MATERIAL.
 - 3) THE SHOULDER WEDGE DEVICE MAY BE DISENGAGED AT PAVED DRIVEWAYS AND SIDE STREETS.



SHOULDER WEDGE DETAIL
 (Resurfacing Projects w/ Widening or
 with Existing Paved Shoulder having no dropoffs)



SHOULDER WEDGE DETAIL
 (Resurfacing Projects w/ NO Widening)



SHOULDER WEDGE DETAIL
 (Resurfacing Adjacent to
 Rutted Shoulder)

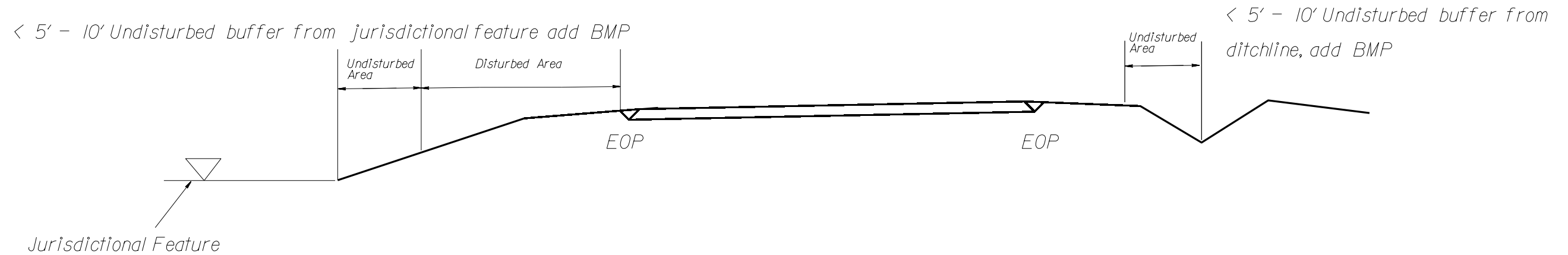
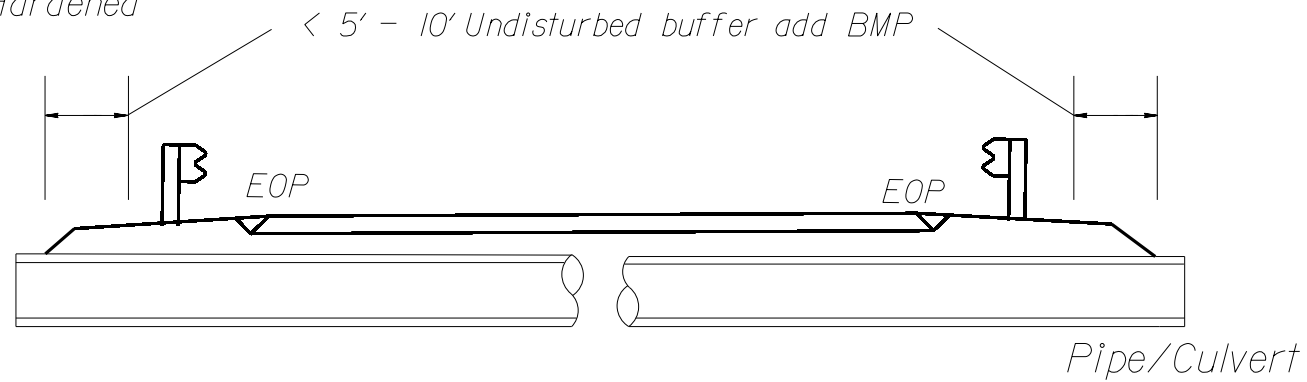
- SHOULDER WEDGE ANGLE = 30°

CONTRACT STANDARDS AND DEVELOPMENT UNIT	
Office 919-707-6950	FAX 919-250-4119
SHOULDER WEDGE DETAILS	
ORIGINAL BY: T.SPELL	DATE: 7-19-11
MODIFIED BY:	DATE: 10/16/12
CHECKED BY:	DATE:
FILE SPEC.: s:\usr\details\stand\shoulderwedgedetail.dgn	

NOTES: Less than 5' - 10' undisturbed buffer from ROW, ditchline, water feature, or drainage inlet, add BMP.

BMP Options: Wattle, Silt Fence or Hardened Aggregate.

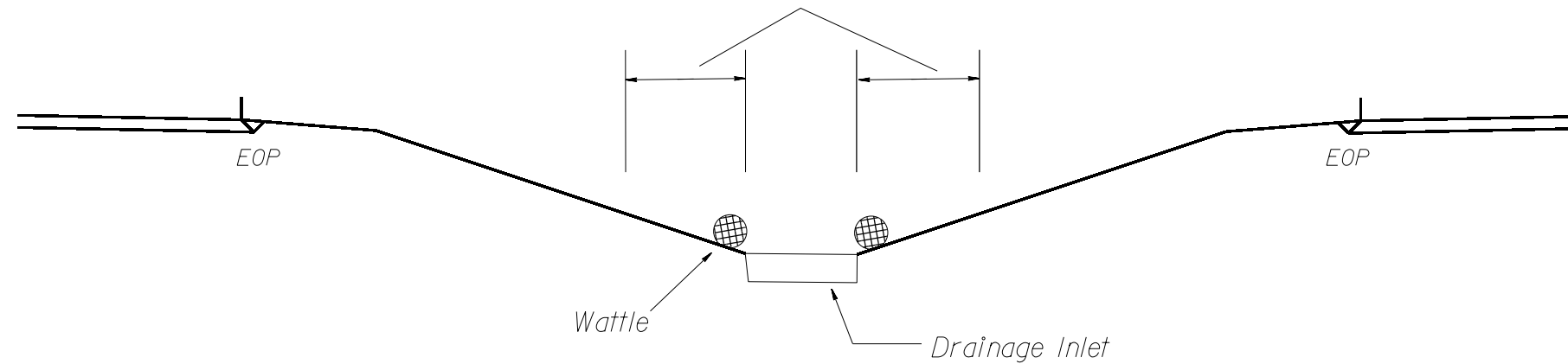
EROSION CONTROL DETAIL



Use BMP's if shoulders and/or frontslopes and/or ditchline and/or backslopes are disturbed

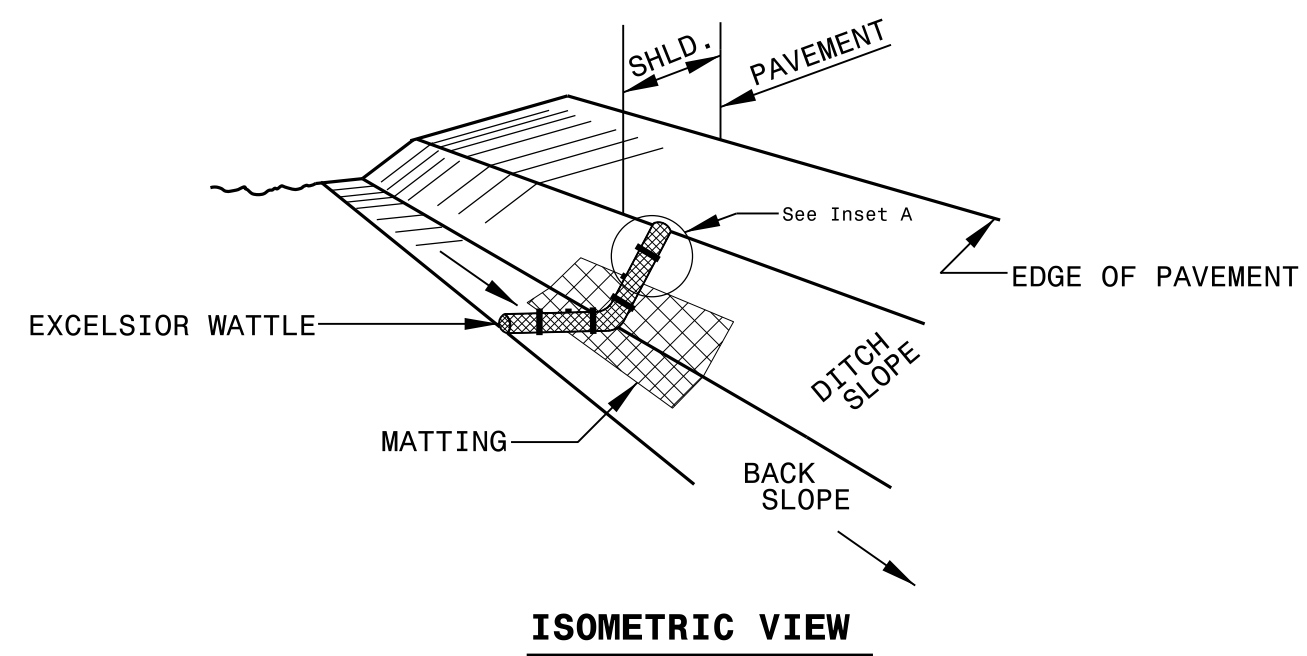


< 5' - 10' Undisturbed buffer from inlet, add wattle



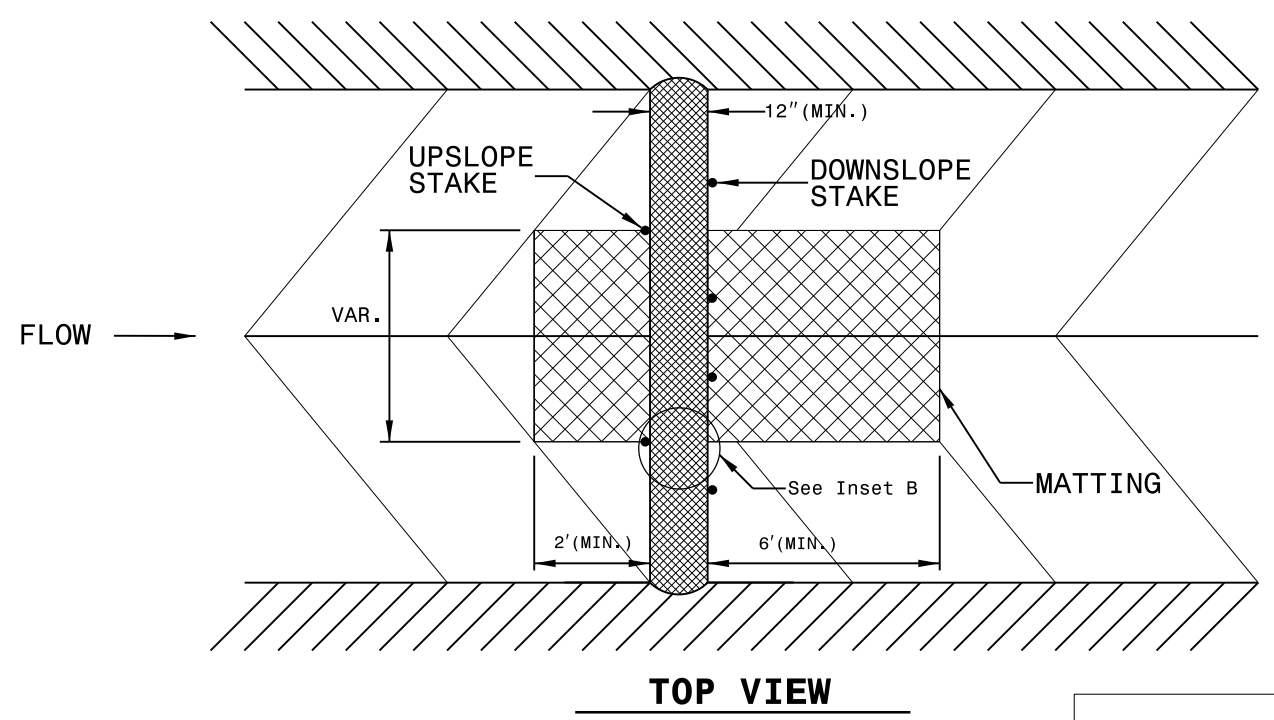
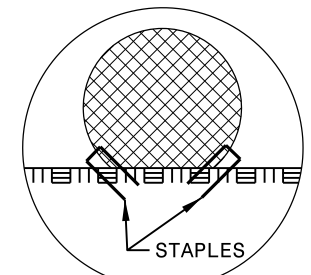
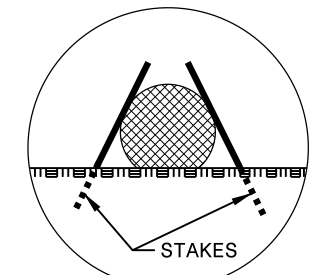
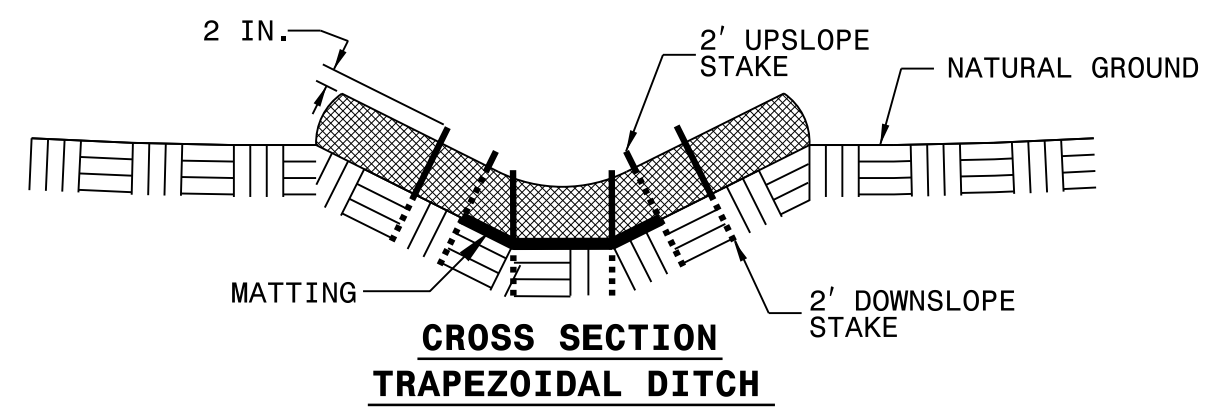
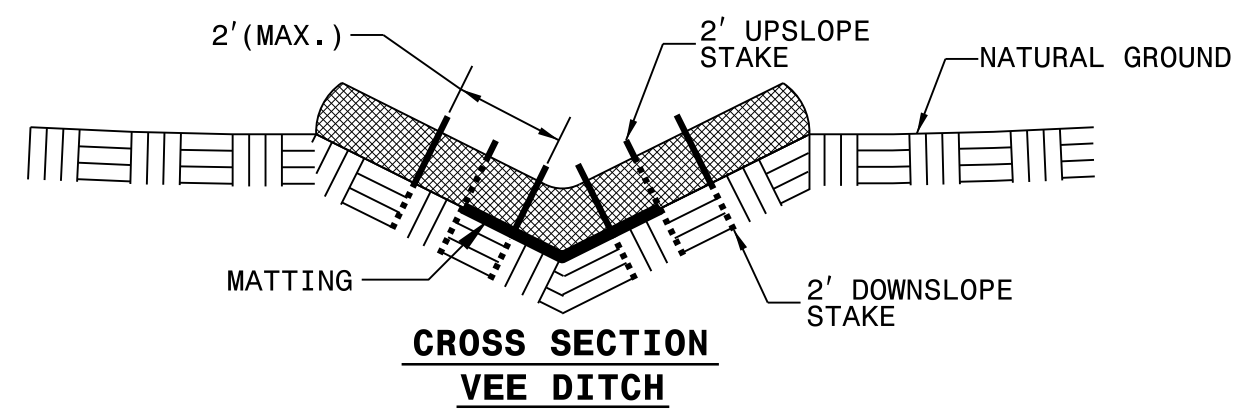
NOT TO SCALE

WATTLE DETAIL



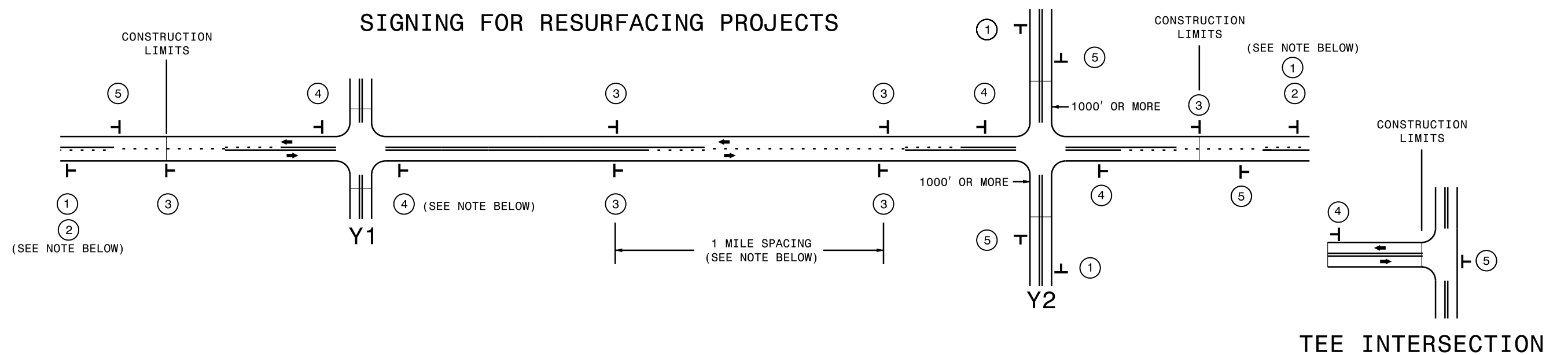
NOTES:

- USE MINIMUM 12 IN. DIAMETER EXCELSIOR WATTLE.
- USE 2 FT. WOODEN STAKES WITH A 2 IN. BY 2 IN. NOMINAL CROSS SECTION.
- ONLY INSTALL WATTLE(S) TO A HEIGHT IN DITCH SO FLOW WILL NOT WASH AROUND WATTLE AND SCOUR DITCH SLOPES AND AS DIRECTED.
- INSTALL A MINIMUM OF 2 UPSLOPE STAKES AND 4 DOWNSLOPE STAKES AT AN ANGLE TO WEDGE WATTLE TO BOTTOM OF DITCH.
- PROVIDE STAPLES MADE OF 0.125 IN. DIAMETER STEEL WIRE FORMED INTO A U SHAPE NOT LESS THAN 12" IN LENGTH.
- INSTALL STAPLES APPROXIMATELY EVERY 1 LINEAR FOOT ON BOTH SIDES OF WATTLE AND AT EACH END TO SECURE IT TO THE SOIL.
- INSTALL MATTING IN ACCORDANCE WITH SECTION 1631 OF THE STANDARD SPECIFICATIONS.



NOT TO SCALE

SIGNING FOR RESURFACING PROJECTS



LEGEND	
T	STATIONARY SIGN
←	DIRECTION OF TRAFFIC FLOW

MAINLINE (-L-) SIGNING

-Y- LINE SIGNING

SIGNING NOTES AND PLACEMENT PER DIRECTION	MAINLINE (-L-) SIGNING		-Y- LINE SIGNING	
	1	<p>W20-1 48" X 48"</p>	<p>PLACE 1000' PRIOR TO BEGINNING OF CONSTRUCTION LIMITS. ONLY USED ON -Y- LINES IF RESURFACING LIMITS EXTEND 1000' ALONG -Y- LINE.</p>	<p>NO REQUIRED STATIONARY SIGNING FOR THE FOLLOWING -Y- LINE CONDITIONS:</p> <ol style="list-style-type: none"> 1) LESS THAN 1000' OF RESURFACING ALONG -Y- LINE 2) SUBDIVISION ROADS 3) DEAD END ROADS <p>WHEN PAVING/CONSTRUCTION ACTIVITIES PROCEED ACROSS AN UNSIGNED -Y- LINE, ADVANCE WARNING PORTABLE SIGNS SHALL BE USED ALONG THE -Y- LINE AS SHOWN BELOW. REMOVE UPON COMPLETION OF WORK.</p> <div style="display: flex; justify-content: space-around;"> <div> <p>W20-1 48" X 48"</p> </div> <div> <p>W20-7 A 48" X 48"</p> </div> </div> <p>PLACED 500' IN ADVANCE OF FLAGGER. PLACED 250' IN ADVANCE OF FLAGGER.</p>
	2	<p>W7-3aP 24" X 18"</p>	<p>#2 SIGN ONLY USED WHEN RESURFACING LIMITS ARE 2 OR MORE MILES IN LENGTH. ROUND UP TO NEXT WHOLE NUMBER. (NO FRACTIONAL OR DECIMAL NUMBERS)</p>	
	3	<p>SP 13107 48" X 48"</p>	<ul style="list-style-type: none"> - PLACE INITIALLY AT THE CONSTRUCTION LIMITS AND SPACE 1 MILE APART THEREAFTER. - AT TEE INTERSECTIONS INSTALL INITIALLY 1/2 MILE FROM INTERSECTION AND SPACE 1 MILE APART THEREAFTER. 	
	4	<p>SP 13106 48" X 48"</p>	<ul style="list-style-type: none"> - THESE ARE FOR -Y- LINES THAT ARE "THROUGH" ROADWAYS. - DEAD END AND SUBDIVISION ROADS ARE NOT "THROUGH" ROADWAYS. - INSTALL 500' +/- FROM EACH -Y- LINE APPROACH AS SHOWN ABOVE. - FOR MULTIPLE -Y- LINES THAT ARE SEPARATED BY 0.25 MILES OR LESS, TREAT AS A SINGLE UNIT AND INSTALL WITHIN 500' OF EACH APPROACH. - A MAXIMUM OF 2 SIGN SETS PER MILE. DO NOT INSTALL WHEN -Y- LINES ARE WITHIN 0.5 MILES FROM "END ROAD WORK" SIGN. - FOR TEE INTERSECTIONS, INSTALL WITHIN 500' +/- OF THE INTERSECTION ALONG -L- LINE. 	
5	<p>G20-2 A 48" X 24"</p>	<p>PLACE 500' FOLLOWING THE END OF CONSTRUCTION LIMITS OR AS SHOWN WHEN WORK ENDS AT A 3-WAY TEE INTERSECTION.</p>		